

# FOR LEASE: OFFICE SPACE BRIDGEPORT NEIGHBORHOOD 2869 SOUTH ARCHER



## SPECIFICATIONS:

|                  |                               |
|------------------|-------------------------------|
| Size:            | ± 4,280 SF                    |
| Asking Rent:     | \$16 PSF modified gross       |
| Utilities & CAM: | Pro rata share paid by tenant |

## ATTRIBUTES:

- Pristine existing conditions and well maintained building.
- Full floor opportunity, 2nd floor space with an elevator and elevator identity.
- Convenient access to I-55, I-90/ I-94, the Loop, and various other neighborhoods.
- Ideally situated in between two CTA orange line stops (Halsted and Ashland).
- Easy neighborhood street parking and surface parking lot available after bank business hours.
- Exterior building signage available with exposure to over 22,000 VPD.



**Noah O'Neill**  
**[noneill@rnrealty.com](mailto:noneill@rnrealty.com)**  
**312.245.5206**

Content contained herein is from sources deemed reliable and is subject to errors, omissions, and change without notice. No representations or warranties are made or implied hereby.

RN Realty LLC

225 West Illinois, Suite 350, Chicago, IL 60654

[www.rnrealty.com](http://www.rnrealty.com)

# FOR LEASE: OFFICE SPACE BRIDGEPORT NEIGHBORHOOD 2869 SOUTH ARCHER



**Noah O'Neill**  
**[noneill@rnrealty.com](mailto:noneill@rnrealty.com)**  
**312.245.5206**

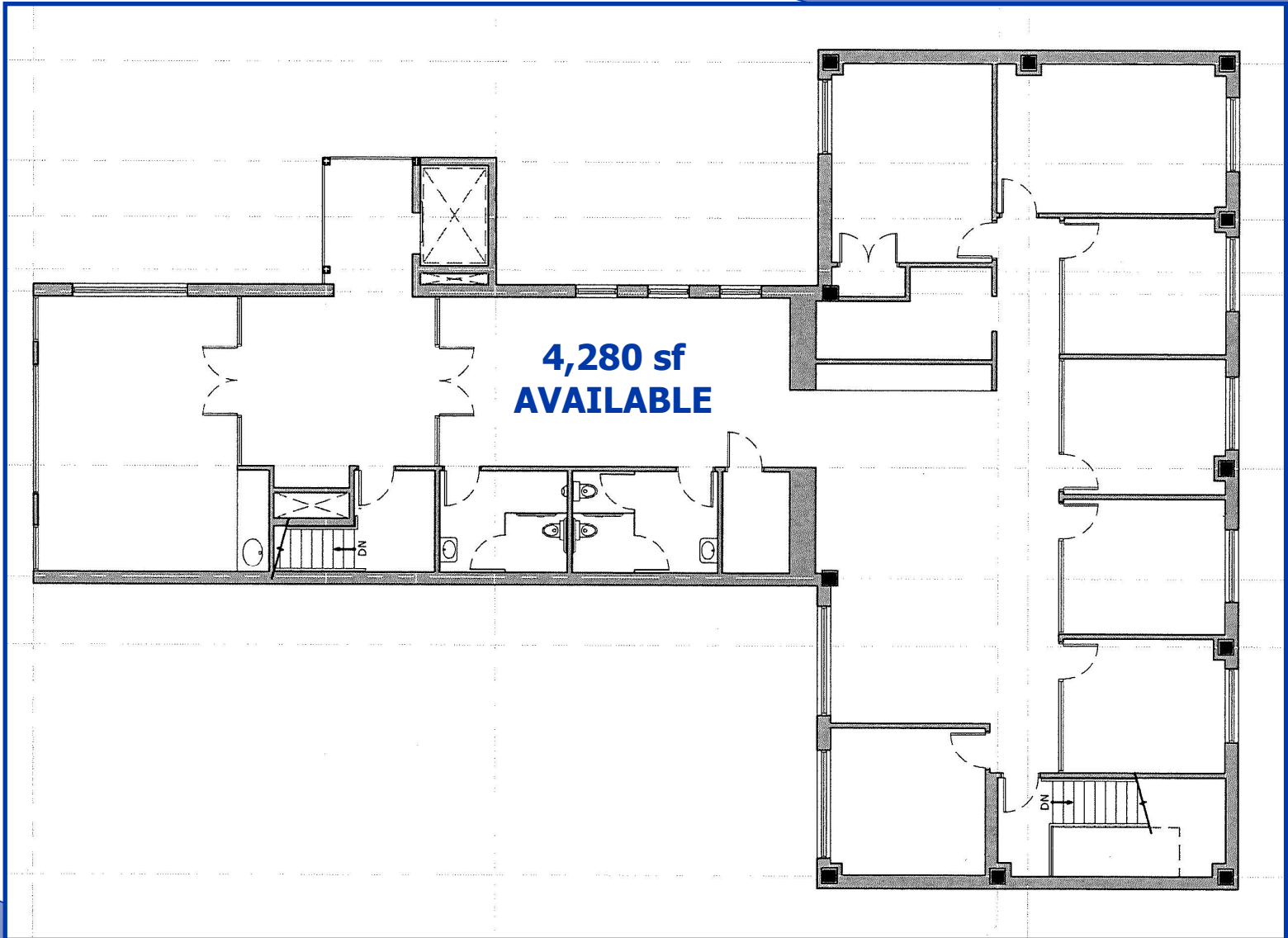
Content contained herein is from sources deemed reliable and is subject to errors, omissions, and change without notice. No representations or warranties are made or implied hereby.

RN Realty LLC

225 West Illinois, Suite 350, Chicago, IL 60654

[www.rnrealty.com](http://www.rnrealty.com)

# FOR LEASE: OFFICE SPACE BRIDGEPORT NEIGHBORHOOD 2869 SOUTH ARCHER



**Noah O'Neill**  
[noneill@rnrealty.com](mailto:noneill@rnrealty.com)  
**312.245.5206**

Content contained herein is from sources deemed reliable and is subject to errors, omissions, and change without notice. No representations or warranties are made or implied hereby.

RN Realty LLC

225 West Illinois, Suite 350, Chicago, IL 60654

[www.rnrealty.com](http://www.rnrealty.com)

# FOR LEASE: OFFICE SPACE BRIDGEPORT NEIGHBORHOOD 2869 SOUTH ARCHER



**Noah O'Neill**  
**[noneill@rnrealty.com](mailto:noneill@rnrealty.com)**  
**312.245.5206**