

# PILSEN RETAIL NEW CONSTRUCTION NOW COMPLETE 901 - 905 WEST 18th STREET

## SPECIFICATIONS:

901 (East Space):	± 1,280 SF
905 (West Space):	± 1,050 SF
Net Rent:	\$32.00 PSF

## AREA CO-TENANTS:



## ATTRIBUTES:

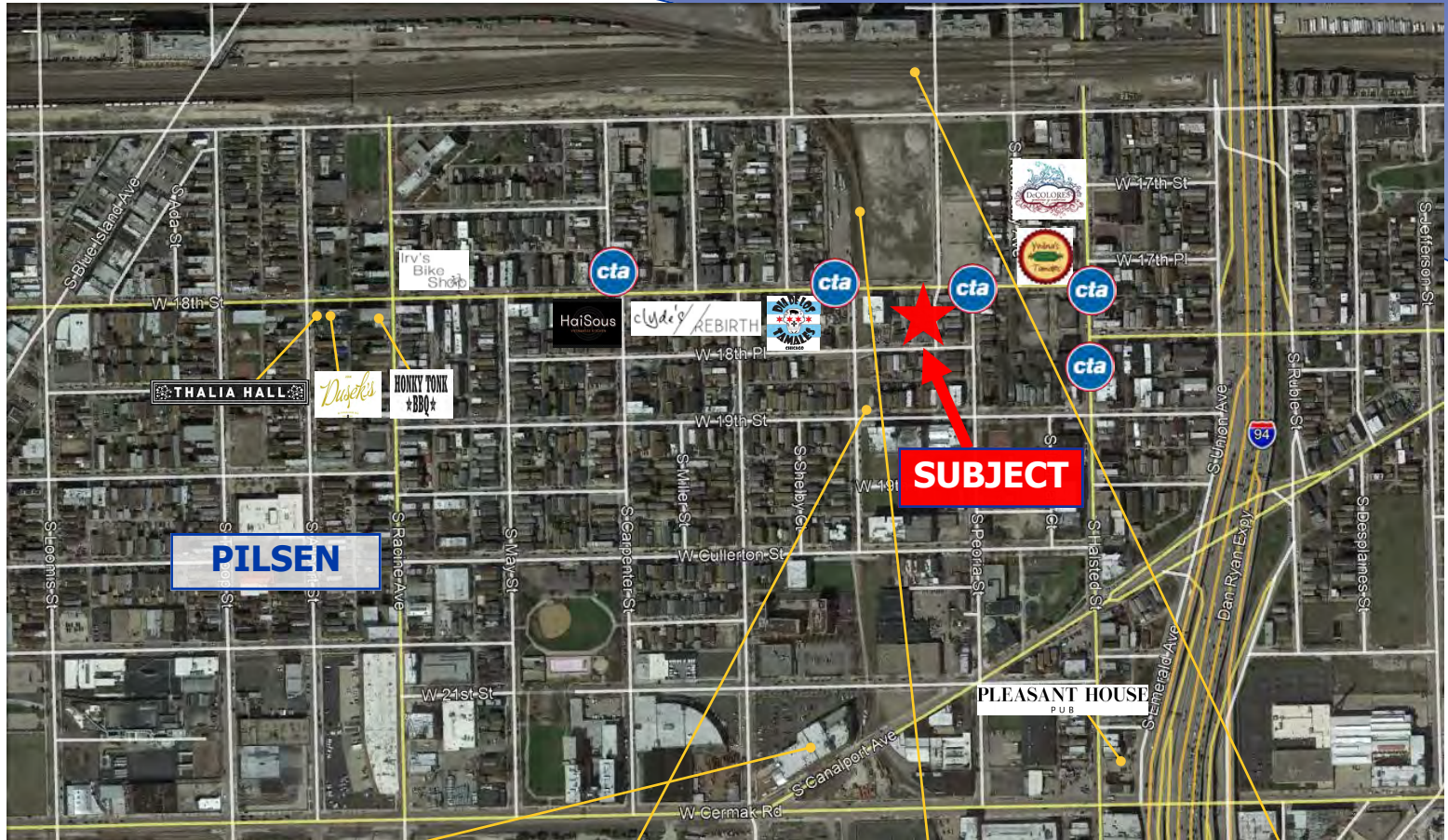
- Bustling Pilsen neighborhood location on main thoroughfare, 18th street.
- Rare for the area - new construction retail space
- Directly across the street from the proposed ParkWorks 7.85 acre massive mixed use development.
- Walking distance to the proposed MuralPark re-development project which is expected to include +/- 200,000 SF of office and public plaza area.
- Adjacent to the new Paseo Trail which recently started construction (similar to 606 in Bucktown)
- Landlord is willing to assist with interior build out
- Area home prices have skyrocketed from \$84 to \$225 per sq. ft. over the past five years according to Chicago Magazine
- Ideal uses include boutique, office, coffee / tea / juice, medical, salon, etc.



**Noah O'Neill**  
**[noneill@rnrealty.com](mailto:noneill@rnrealty.com)**  
**312.245.5206**



# PILSEN RETAIL NEW CONSTRUCTION - NOW COMPLETE MARKET AERIAL

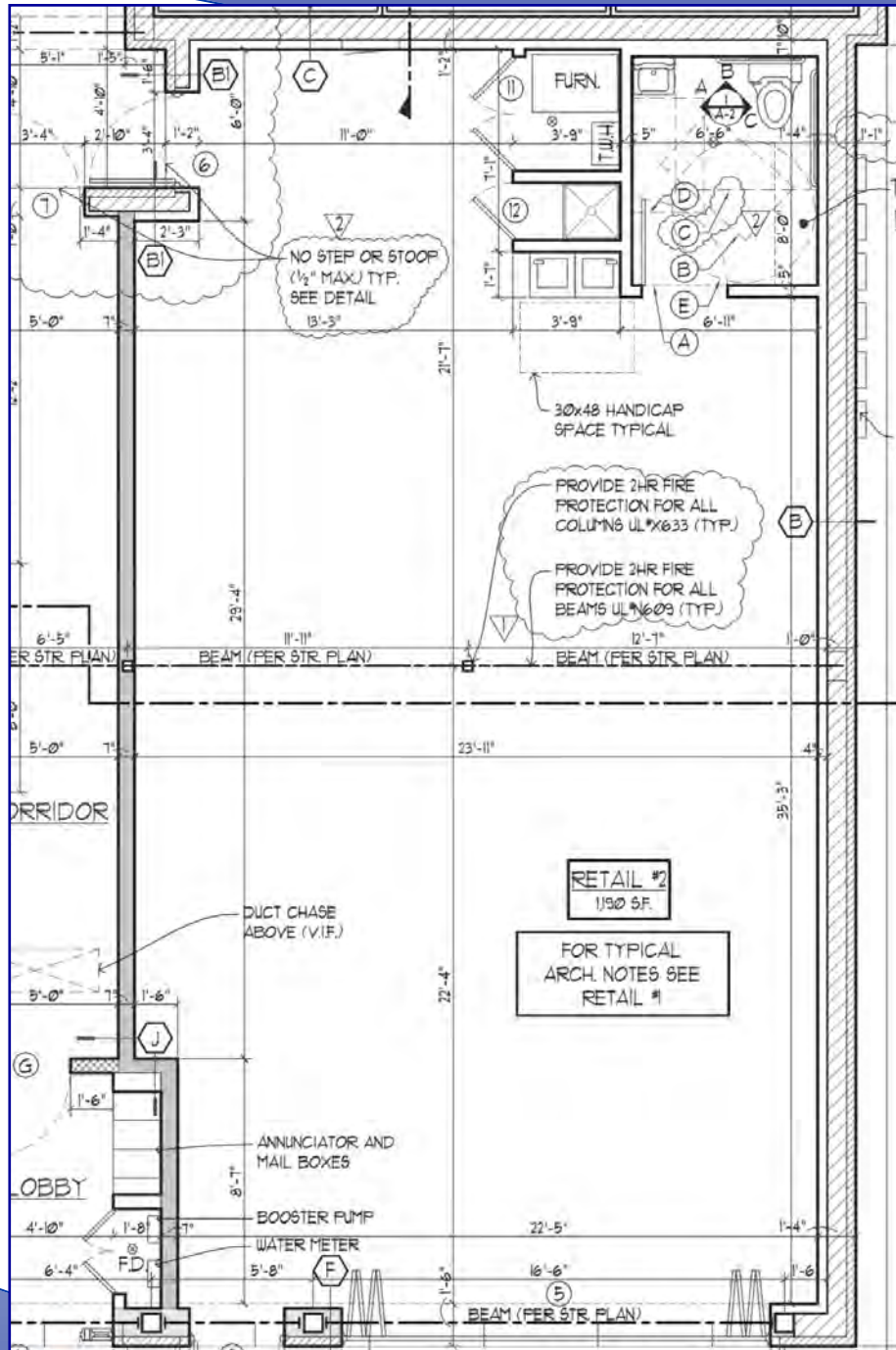


## PROPOSED AREA PROJECTS



**Noah O'Neill**  
[noneill@rnrealty.com](mailto:noneill@rnrealty.com)  
**312.245.5206**

# PILSEN RETAIL NEW CONSTRUCTION - NOW COMPLETE FLOOR PLAN FOR 905 (WEST SPACE)



**Noah O'Neill**  
[noneill@rnrealty.com](mailto:noneill@rnrealty.com)  
**312.245.5206**

Content contained herein is from sources deemed reliable and is subject to errors, omissions, and change without notice. No representations or warranties are made or implied hereby.

RN Realty LLC

225 West Illinois, Suite 350, Chicago, IL 60654

[www.rnrealty.com](http://www.rnrealty.com)